

**APPLICATION FOR LOW VOLTAGE DIRECTIVE**

**On Behalf of**

**AOK LED Light Company Limited  
LED High Bay Light**

**Model: See model list for “General product information”**

**Prepared For : AOK LED Light Company Limited**

East of third floor, Building 1, St George's Industrial Park,  
Shajing street, Baoan District, Shenzhen, China (Second floor,  
Building 4, St George's Industrial Park)

**Prepared By : Shenzhen Anbotek Compliance Laboratory Limited**

1/F, Building D, Sogood Science and Technology Park,  
Sanwei community, Hangcheng Street, Bao'an District,  
Shenzhen, Guangdong, China.518102

Tel: (86)755-26066544

Fax: (86)755-26014772

**Date of Test: Oct. 26, 2017 to Nov. 07, 2017**

**Date of Report: Nov. 07, 2017**

**Report Number: R0117110003S**

**TEST REPORT**  
**IEC 60598-2-1**  
**Luminaires**  
**Part 2: Particular requirements**  
**Section 1: Fixed general purpose luminaires**

**Report**

Report reference No.....: R0117110003S  
 Compiled by.....: Augus Liu  
 Approved by.....: Nico Zou  
 Date of issue .....: Nov. 07, 2017  
 Contents.....: 47 pages



*Augus Liu*  
*Nico Zou*

**Testing laboratory**

Name .....: Shenzhen Anbotek Compliance Laboratory Limited  
 Address .....: 1/F, Building D, Sogood Science and Technology Park, Sanwei community, Hangcheng Street, Bao'an District, Shenzhen, Guangdong, China.518102  
 Testing location .....: Same as above


**Applicant**

Name .....: AOK LED Light Company Limited  
 Address.....: East of third floor, Building 1, St George's Industrial Park, Shajing street, Baoan District, Shenzhen, China (Second floor, Building 4, St George's Industrial Park)

**Test specification**

Standard.....: IEC 60598-2-1:1979+A1:1987 used in conjunction with IEC 60598-1:2014  
 Procedure deviation .....: N.A.  
 Non-standard test method .....: N.A.

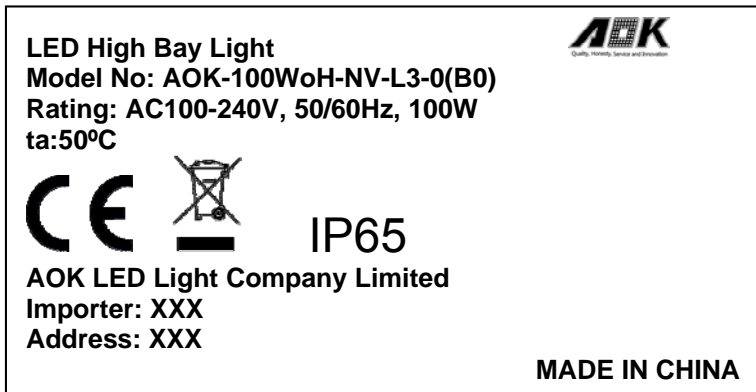
**Test item Description**

Product name.....: LED High Bay Light  
 Trademark .....:   
 Manufactory .....: Same as applicant  
 Address.....: Same as applicant  
 Factory .....: Same as applicant  
 Address.....: Same as applicant  
 Model and/or type reference .....: See model list for "General product information"  
 Rating(s) .....: AC100V-240V, 50/60Hz  
 other details see "General product information"

<b>Test item particulars</b>	
Classification of installation and use .....	Fixed luminaires
Supply connection .....	Non-detachable power cord without plug
Protection class.....	Class I
Degree of protection .....	IP65
<b>Test case verdicts</b>	
Test case does not apply to the test object .....	N(N.A.)
Test item does meet the requirement .....	P(Pass)
Test item does not meet the requirement .....	F(Fail)
<b>Testing</b>	
Date of receipt of test item.....	Oct. 26, 2017
Date(s) of performance of test .....	Oct. 26, 2017 to Nov. 07, 2017
<b>General remarks</b>	
<p>This report shall not be reproduced except in full without the written approval of the testing laboratory.          The test results presented in this report relate only to the item tested.          Clause numbers between brackets refer to clauses in EN 60598- 1.          "(see remark #)" refers to a remark appended to the report.          "(see Annex #)" refers to an annex appended to the report.          Throughout this report a comma is used as the decimal separator.          According to the EU directives which have been aligned with EU NLF (new legislative framework), both of manufacturer and importer's name and address shall be affixed on the product or, where that is not possible, on its packaging or in a document accompanying the product before the product is placed on the EU market.</p>	
<b>Summary of testing</b>	
<p>Tests performed</p> <ul style="list-style-type: none"> <li>- EN 60598-1:2015</li> <li>- EN 60598-2-1:1989</li> <li>- EN 62031:2008+A1:2013+A2:2015</li> <li>- EN 62471:2008</li> <li>- EN 62493:2015</li> </ul> <p>The submitted samples were found to comply with the above specification.</p>	

**Copy of marking plate**

Location: Sticking on the enclosure.



Remark: height of WEEE symbol at least 7mm; height of other symbols at least 5mm, height of letters and numbers at least 2mm.

Rating label for other models is same as AOK-100WoH-NV-L3-0(B0) except that number no. and power consumption are different.

**General product information:**

LED High Bay Light, ta 50°C, IP65, used for indoor and outdoor.

**Model list:**

Model No.	Input power (W)	LED driver	Dimension
AOK-60WoH-NV-X-0(B)	60W	HBG-100-48B	Φ248*138
AOK-100WoH-NV-X-0(B)	100W	HBG-100-48B	Φ248*138
AOK-150WoH-NV-X-0(B)	150W	HBG-160-48B	Φ319*138
AOK-200WoH-NV-X-0(B)	200W	HBG-200-48B	Φ400*141
AOK-240WoH-NV-X-0(B)	240W	HBG-240-48B	Φ400*141

**Remark:**

“X” can be L3, L5, O3, O5 and N3 which stands for different LEDs type; when X=L3, stands for LED type is LUXEON 3030 2D; when X=L5, stands for LED type is LUXEON 5050; when X=O3, stands for LED type is GW PSLR31.PM; when X=O5, stands for LED type is GW P9LR31.EM 5050; when X=N3, stands for LED type is NICHIA 3030.

“B” can be B0 and B1 which stands for different light type; when Y=B0, stands for light from front; when Y=B1, stands for light from front and light from back.

All models have the same as construction.

Unless otherwise specified, models AOK-100WoH-NV-L3-0(B0), AOK-150WoH-NV-L3-0(B0) and AOK-240WoH-NV-L3-0(B0) were selected as representative models to perform all tests.

**List of Attachments**

Attachment 1: Test report of EN 62031:2008+A1:2013+A2:2015

Attachment 2: Test report of EN 62471:2008

Attachment 3: Test report of EN 62493:2015

Attachment 4: European differences according to EN 60598-2-1:1989 and EN 60598-1:2015

Attachment 5: Photo documentation

IEC 60598-2-1			
Clause	Requirement + Test	Result - Remark	Verdict
<b>1.2 (0)</b>	<b>GENERAL TEST REQUIREMENTS</b>		—
1.2 (0.1)	Information for luminaire design considered..... :	Standard Yes <input checked="" type="checkbox"/> No <input type="checkbox"/>	—
1.2 (0.3)	More sections applicable..... :	Yes <input type="checkbox"/> No <input checked="" type="checkbox"/>	—

<b>1.4 (2)</b>	<b>CLASSIFICATION</b>		—
1.4 (2.2)	Type of protection .....	Class I	—
1.4 (2.3)	Degree of protection..... :	IP65	—
1.4 (2.4)	Luminaire suitable for direct mounting on normally flammable surfaces..... :	Yes <input checked="" type="checkbox"/> No <input type="checkbox"/>	—
1.4 (2.5)	Luminaire for normal use .....	Yes <input checked="" type="checkbox"/> No <input type="checkbox"/>	—
	Luminaire for rough service .....	Yes <input type="checkbox"/> No <input checked="" type="checkbox"/>	—

<b>1.5 (3)</b>	<b>MARKING</b>		—
1.5 (3.2)	Mandatory markings		P
	Position of the marking		P
	Format of symbols/text		P
1.5 (3.3)	Additional information		P
	Language of instructions	English	P
1.5 (3.3.1)	Combination luminaires		N
1.5 (3.3.2)	Nominal frequency in Hz	50/60Hz	P
1.5 (3.3.3)	Operating temperature		N
1.5 (3.3.4)	Symbol or warning notice		N
1.5 (3.3.5)	Wiring diagram		N
1.5 (3.3.6)	Special conditions		N
1.5 (3.3.7)	Metal halide lamp luminaire – warning		N
1.5 (3.3.8)	Limitation for semi-luminaires		N
1.5 (3.3.9)	Power factor and supply current		N
1.5 (3.3.10)	Suitability for use indoors		N
1.5 (3.3.11)	Luminaires with remote control		N
1.5 (3.3.12)	Clip-mounted luminaire – warning		N
1.5 (3.3.13)	Specifications of protective shields		N
1.5 (3.3.14)	Symbol for nature of supply	~	P
1.5 (3.3.15)	Rated current of socket outlet		N
1.5 (3.3.16)	Rough service luminaire		N

IEC 60598-2-1			
Clause	Requirement + Test	Result - Remark	Verdict
1.5 (3.3.17)	Mounting instruction for type Y, type Z and some type X attachments	Type Z	P
1.5 (3.3.18)	Non-ordinary luminaires with PVC cable		N
1.5 (3.3.19)	Protective conductor current in instruction if applicable		N
1.5 (3.3.20)	Provided with information if not intended to be mounted within arm's reach		N
1.5 (3.3.21)	Non-replaceable and non-user replaceable light sources information provided		P
	Cautionary symbol		N
1.5 (3.3.22)	Controllable luminaires, classification of insulation provided		N
1.5 (3.4)	Test with water	15s with water	P
	Test with hexane	15s with hexane	P
	Legible after test		P
	Label attached		P

<b>1.6 (4)</b>	<b>CONSTRUCTION</b>		—
1.6 (4.2)	Components replaceable without difficulty		P
1.6 (4.3)	Wireways smooth and free from sharp edges		P
<b>1.6 (4.4)</b>	<b>Lampholders</b>		N
1.6 (4.4.1)	Integral lampholder		N
1.6 (4.4.2)	Wiring connection		N
1.6 (4.4.3)	Lampholder for end-to-end mounting		N
1.6 (4.4.4)	Positioning		N
	- pressure test (N) .....		—
	After test the lampholder comply with relevant standard sheets and show no damage		N
	After test on single-capped lampholder the lampholder have not moved from its position and show no permanent deformation		N
	- bending test (N) .....		—
	After test the lampholder have not moved from its position and show no permanent deformation		N
1.6 (4.4.5)	Peak pulse voltage		N
1.6 (4.4.6)	Centre contact		N
1.6 (4.4.7)	Parts in rough service luminaires resistant to tracking		N
1.6 (4.4.8)	Lamp connectors		N

IEC 60598-2-1			
Clause	Requirement + Test	Result - Remark	Verdict
1.6 (4.4.9)	Caps and bases correctly used		N
1.6 (4.4.10)	Light source for lampholder or connection according IEC 60061 not connected another way		N
<b>1.6 (4.5)</b>	<b>Starter holders</b>		N
	Starter holder in luminaires other than class II		N
	Starter holder class II construction		N
<b>1.6 (4.6)</b>	<b>Terminal blocks</b>		N
	Tails		N
	Unsecured blocks		N
<b>1.6 (4.7)</b>	<b>Terminals and supply connections</b>		P
1.6 (4.7.1)	Contact to metal parts		N
1.6 (4.7.2)	Test 8 mm live conductor		N
	Test 8 mm earth conductor		N
1.6 (4.7.3)	Terminals for supply conductors		P
1.6 (4.7.3.1)	Welded method and material		N
	- stranded or solid conductor		N
	- spot welding		N
	- welding between wires		N
	- Type Z attachment		N
	- mechanical test according to 15.8.2		N
	- electrical test according to 15.9		N
	- heat test according to 15.9.2.3 and 15.9.2.4		N
1.6 (4.7.4)	Terminals other than supply connection		P
1.6 (4.7.5)	Heat-resistant wiring/sleeves		N
1.6 (4.7.6)	Multi-pole plug		N
	- test at 30 N		N
<b>1.6 (4.8)</b>	<b>Switches</b>		N
	- adequate rating		N
	- adequate fixing		N
	- polarized supply		N
	- compliance with IEC 61058-1 for electronic switches		N
<b>1.6 (4.9)</b>	<b>Insulating lining and sleeves</b>		N
1.6 (4.9.1)	Retention		N
	Method of fixing.....:		—
1.6 (4.9.2)	Insulated linings and sleeves:		N

IEC 60598-2-1			
Clause	Requirement + Test	Result - Remark	Verdict
	Resistant to a temperature > 20 °C to the wire temperature or		N
	a) & c) Insulation resistance and electric strength		N
	b) Ageing test. Temperature (°C).....:		N
<b>1.6 (4.10)</b>	<b>Double or reinforced insulation</b>		N
1.6 (4.10.1)	No contact, mounting surface – accessible metal parts – wiring of basic insulation		N
	Safe installation fixed luminaires		N
	Capacitors and switches		N
	Interference suppression capacitors according to IEC 60384-14		N
1.6 (4.10.2)	Assembly gaps:		N
	- not coincidental		N
	- no straight access with test probe		N
1.6 (4.10.3)	Retention of insulation:		N
	- fixed		N
	- unable to be replaced; luminaire inoperative		N
	- sleeves retained in position		N
	- lining in lampholder		N
<b>1.6 (4.11)</b>	<b>Electrical connections and current-carrying parts</b>		P
1.6 (4.11.1)	Contact pressure		P
1.6 (4.11.2)	Screws:		N
	- self-tapping screws		N
	- thread-cutting screws		N
1.6 (4.11.3)	Screw locking:		P
	- spring washer		P
	- rivets		N
1.6 (4.11.4)	Material of current-carrying parts		P
1.6 (4.11.5)	No contact to wood or mounting surface		P
1.6 (4.11.6)	Electro-mechanical contact systems		N
<b>1.6 (4.12)</b>	<b>Screws and connections (mechanical) and glands</b>		P
1.6 (4.12.1)	Screws not made of soft metal		P
	Screws of insulating material		N
	Torque test: torque (Nm); part.....:	Screw fixing enclosure: 1.2Nm	P
	Torque test: torque (Nm); part.....:	Screw LED driver: 2.5Nm	P
1.6 (4.12.2)	Screws with diameter < 3 mm screwed into metal		N



IEC 60598-2-1			
Clause	Requirement + Test	Result - Remark	Verdict
1.6 (4.12.4)	Locked connections:		N
	- fixed arms; torque (Nm)..... :		N
	- lampholder; torque (Nm)..... :		N
	- push-button switches; torque 0,8 Nm..... :		N
1.6 (4.12.5)	Screwed glands; force (Nm)..... :	Plastic glands for supply cord; 5Nm Metal glands for supply cord; 7.5Nm	P
<b>1.6 (4.13)</b>	<b>Mechanical strength</b>		P
1.6 (4.13.1)	Impact tests:		P
	- fragile parts; energy (Nm)..... :	Glass cover: 0.2Nm	P
	- other parts; energy (Nm)..... :	Enclosure: 0.35Nm	P
	1) live parts		P
	2) linings		N
	3) protection		P
	4) covers		P
1.6 (4.13.3)	Straight test finger		P
1.6 (4.13.4)	Rough service luminaires		N
	- IP54 or higher		N
	a) fixed		N
	b) hand-held		N
	c) delivered with a stand		N
	d) for temporary installations and suitable for mounting on a stand		N
1.6 (4.13.6)	Tumbling barrel		N
<b>1.6 (4.14)</b>	<b>Suspensions, fixings and means of adjusting</b>		P
1.6 (4.14.1)	Mechanical load:		P
	A) four times the weight	4 x Max.6.7Kg= 26.8Kg	P
	B) torque 2,5 Nm		N
	C) bracket arm; bending moment (Nm)..... :		N
	D) load track- mounted luminaires		N
	E) clip-mounted luminaires, glass-shelve. Thickness (mm) .....		N
	Metal rod. diameter (mm) .....		N
	Fixed luminaire or independent control gear without fixing devices		N
1.6 (4.14.2)	Load to flexible cables		N

IEC 60598-2-1			
Clause	Requirement + Test	Result - Remark	Verdict
	Mass (kg) .....		—
	Stress in conductors (N/mm <sup>2</sup> ) .....		N
	Mass (kg) of semi-luminaire .....		—
	Bending moment (Nm) of semi-luminaire .....		N
1.6 (4.14.3)	Adjusting devices:		N
	- flexing test; number of cycles.....		N
	- strands broken.....		N
	- electric strength test afterwards		N
1.6 (4.14.4)	Telescopic tubes: cords not fixed to tube; no strain on conductors		N
1.6 (4.14.5)	Guide pulleys		N
1.6 (4.14.6)	Strain on socket-outlets		N
<b>1.6 (4.15)</b>	<b>Flammable materials</b>		P
	- glow-wire test 650°C.....		P
	- spacing ≥30 mm		N
	- screen withstanding test of 13.3.1		N
	- screen dimensions		N
	- no fiercely burning material		P
	- thermal protection		N
	- electronic circuits exempted		N
1.6 (4.15.2)	Luminaires made of thermoplastic material with lamp control gear		N
	a) construction		N
	b) temperature sensing control		N
	c) surface temperature		N
<b>1.6 (4.16)</b>	<b>Luminaires for mounting on normally flammable surfaces</b>		N
	No lamp control gear.....	(compliance with Section 12)	N
1.6 (4.16.1)	Lamp control gear spacing:		N
	- spacing 35 mm		N
	- spacing 10 mm		N
1.6 (4.16.2)	Thermal protection:		N
	- in lamp control gear		N
	- external		N
	- fixed position		N
	- temperature marked lamp control gear		N
1.6 (4.16.3)	Design to satisfy the test of 12.6	(see clause 12.6)	N

IEC 60598-2-1			
Clause	Requirement + Test	Result - Remark	Verdict
<b>1.6 (4.17)</b>	<b>Drain holes</b>		N
	Clearance at least 5 mm		N
<b>1.6 (4.18)</b>	<b>Resistance to corrosion</b>		P
1.6 (4.18.1)	- rust-resistance		P
1.6 (4.18.2)	- season cracking in copper		N
1.6 (4.18.3)	- corrosion of aluminium		P
1.6 (4.19)	Igniters compatible with ballast		N
1.6 (4.20)	Rough service vibration		N
<b>1.6 (4.21)</b>	<b>Protective shield</b>		N
1.6 (4.21.1)	Shield fitted if tungsten halogen lamps or metal halide lamps		N
	Shield of glass if tungsten halogen lamps		N
1.6 (4.21.2)	Particles from a shattering lamp not impair safety		N
1.6 (4.21.3)	No direct path		N
1.6 (4.21.4)	Impact test on shield		N
	Glow-wire test on lamp compartment.....:	See Test Table 1.15 (13.3.2)	N
1.6 (4.22)	Attachments to lamps not cause overheating or damage		N
1.6 (4.23)	Semi-luminaires comply Class II		N
<b>1.6 (4.24)</b>	<b>Photobiological hazards</b>		P
1.6 (4.24.1)	No excessive UV radiation if tungsten halogen lamps and metal halide lamps (Annex P)		N
1.6 (4.24.2)	Retinal blue light hazard		N
	Luminaires with $E_{thr}$ :		N
	a) Fixed luminaires	RG0	N
	- distance x m, borderline between RG1 and RG2... :		N
	- marking and instruction according 3.2.23		N
	b) Portable and handheld luminaires		N
	- marking according 3.2.23 if RG1 exceeded at 200 mm according to IEC/TR 62778		N
	Portable luminaires for children IEC 60598-2-10 and Mains socket outlet nightlights IEC 60598-2-12 not exceed RG1 at 200 mm according to IEC/62778		N
<b>1.6 (4.25)</b>	<b>Mechanical hazard</b>		P
	No sharp point or edges		P
<b>1.6 (4.26)</b>	<b>Short-circuit protection</b>		N

IEC 60598-2-1			
Clause	Requirement + Test	Result - Remark	Verdict
1.6 (4.26.1)	Adequate means of uninsulated accessible SELV parts		N
1.6 (4.26.2)	Short-circuit test with test chain according 4.26.3		N
	Test chain not melt through		N
	Test sample not exceed values of Table 12.1 and 12.2		N
<b>1.6 (4.27)</b>	<b>Terminal blocks with integrated screwless earthing contacts</b>		N
	Test according Annex V		N
	Pull test of terminal fixing (20 N)		N
	After test, resistance < 0,05 Ω		N
	Pull test of mechanical connection (50 N)		N
	After test, resistance < 0,05 Ω		N
	Voltage drop test, resistance < 0,05 Ω		N
<b>1.6 (4.28)</b>	<b>Fixing of thermal sensing control</b>		N
	Not plug-in or easily replaceable type		N
	Reliably kept in position		N
	No adhesive fixing if UV radiations from a lamp can degrade the fixing		N
	Not outside the luminaire enclosure		N
	Test of adhesive fixing:		N
	Max. temperature on adhesive material (°C)..... :		—
	100 cycles between t min and t max		N
	Temperature sensing control still in position		N
<b>1.6 (4.29)</b>	<b>Luminaires with non-replaceable light source</b>		N
	Not possible to replace light source		N
	Live part not accessible after parts have been opened by hand or tools		N
<b>1.6 (4.30)</b>	<b>Luminaires with non-user replaceable light source</b>		P
	If protective cover provide protection against electric shock and marked with “caution, electric shock risk” symbol:		N
	Minimum two fixing means	SELV	N
<b>1.6 (4.31)</b>	<b>Insulation between circuits</b>		P
	Circuits insulated from LV supply fulfil requirements according 4.31.1 – 4.31.3		P
	Controllable luminaires requiring same level of insulation for all components, the insulation between control terminals and LV supply fulfil requirements according 4.31.1 – 4.31.3		N

IEC 60598-2-1			
Clause	Requirement + Test	Result - Remark	Verdict
1.6 (4.31.1)	SELV circuits		P
	Used SELV source		P
	Voltage ≤ ELV		P
	Insulating of SELV circuits from LV supply		P
	Insulating of SELV circuits from other non SELV circuits		N
	Insulating of SELV circuits from FELV		N
	Insulating of SELV circuits from other SELV circuits		N
	SELV circuits insulated from accessible parts according Table X.1		P
	Plugs not able to enter socket-outlets of other voltage systems		N
	Socket outlets does not admit plugs of other voltage systems		N
	Plugs and socket-outlets does not have protective conductor contact		N
1.6 (4.31.2)	FELV circuits		N
	Used FELV source		N
	Voltage ≤ ELV		N
	Insulating of FELV circuits from LV supply		N
	FELV circuits insulated from accessible parts according Table X.1		N
	Plugs not able to enter socket-outlets of other voltage systems		N
	Socket outlets does not admit plugs of other voltage systems		N
	Socket-outlets does not have protective conductor contact		N
1.6 (4.31.3)	Other circuits		N
	Other circuits insulated from accessible parts according Table X.1		N
	Class II construction with equipotential bonding for protection against indirect contacts with live parts:		N
	- conductive parts are connected together		N
	- test according 7.2.3 of above		N
	- conductive part not cause an electric shock in case of an insulation fault		N
	- equipotential bonding in master/slave applications		N

IEC 60598-2-1			
Clause	Requirement + Test	Result - Remark	Verdict
	- master luminaire provided with terminal for accessible conductive parts of slave luminaires		N
	- slave luminaire constructed as class I		N
<b>1.6 (4.32)</b>	<b>Overvoltage protective devices</b>		N
	Comply with IEC 61643-11		N
	External to control gear and connected to earth:		N
	- only in fixed luminaires		N
	- only connected to protective earth		N

1.7 (11)	CREEPAGE DISTANCES AND CLEARANCES	P
1.7 (11.2)	Creepage distances and clearances.....: See Table 1.7 (11.2)	—
	Working voltage (V).....: 100-240VAC(for LED driver) Max.49VDC(for LED module)	—
	Rated pulse voltage (kV).....: 2.5KV	—
	Voltage form.....: Sinusoidal <input checked="" type="checkbox"/> (input of LED driver) Non-sinusoidal <input checked="" type="checkbox"/> (input of LED module)	—
	PTI.....: < 600 <input checked="" type="checkbox"/> (for other parts) ≥ 600 <input checked="" type="checkbox"/> (for LED module)	—
	Impulse withstand category (Normal category II) (Category III Annex U)	Category II <input checked="" type="checkbox"/> Category III <input type="checkbox"/>

1.8 (7)	PROVISION FOR EARTHING	—
1.8 (7.2.1 + 7.2.3)	Accessible metal parts	P
	Metal parts in contact with supporting surface	P
	Resistance < 0,5 Ω.....: 0.012Ω	P
	Self-tapping screws used	P
	Thread-forming screws	N
	Thread-forming screw used in a groove	N
	Earth makes contact first	N
	Terminal blocks with integrated screwless earthing contacts tested according Annex V	N
	Protective earthing of the luminaire not via built-in control gear	N
1.8 (7.2.2 + 7.2.3)	Earth continuity in joints, etc.	P

<b>IEC 60598-2-1</b>			
Clause	Requirement + Test	Result - Remark	Verdict
1.8 (7.2.4)	Locking of clamping means		P
	Compliance with 4.7.3		P
	Terminal blocks with integrated screwless earthing contacts tested according Annex V		N
1.8 (7.2.5)	Earth terminal integral part of connector socket		N
1.8 (7.2.6)	Earth terminal adjacent to mains terminals		P
1.8 (7.2.7)	Electrolytic corrosion of the earth terminal		P
1.8 (7.2.8)	Material of earth terminal		P
	Contact surface bare metal		P
1.8 (7.2.10)	Class II luminaire for looping-in		N
	Double or reinforced insulation to functional earth		N
1.8 (7.2.11)	Earthing core coloured green-yellow		P
	Length of earth conductor		P

<b>1.9 (14)</b>	<b>SCREW TERMINALS</b>		—
	Separately approved; component list.....:	(see Annex 1)	N
	Part of the luminaire.....:	(see Annex 3)	N

<b>1.9 (15)</b>	<b>SCREWLESS TERMINALS AND ELECTRICAL CONNECTIONS</b>		—
	Separately approved; component list.....:	(see Annex 1)	N
	Part of the luminaire.....:	(see Annex 4)	N

<b>1.10 (5)</b>	<b>EXTERNAL AND INTERNAL WIRING</b>		—
<b>1.10 (5.2)</b>	<b>Supply connection and external wiring</b>		P
1.10 (5.2.1)	Means of connection.....:	Non-detachable supply cord without plug	P
	Outdoor luminaire has not PVC insulated external wiring if not class III or SELV ≤ 25 V a.c./60 V d.c. or protected from outdoor environment		N
1.10 (5.2.2)	Type of cable.....:	H05VV-F	P
	Nominal cross-sectional area (mm <sup>2</sup> ).....:	3G1.0mm <sup>2</sup>	P
	Cables equal to IEC 60227 or IEC 60245	IEC 60245	P
1.10 (5.2.3)	Type of attachment, X, Y or Z	Z	P
1.10 (5.2.5)	Type Z not connected to screws		P
1.10 (5.2.6)	Cable entries:		P
	- suitable for introduction		P

IEC 60598-2-1			
Clause	Requirement + Test	Result - Remark	Verdict
	- adequate degree of protection		P
1.10 (5.2.7)	Cable entries through rigid material have rounded edges		P
1.10 (5.2.8)	Insulating bushings:		N
	- suitably fixed		N
	- material in bushings		N
	- material not likely to deteriorate		N
	- tubes or guards made of insulating material		N
1.10 (5.2.9)	Locking of screwed bushings		N
1.10 (5.2.10)	Cord anchorage:		P
	- covering protected from abrasion		P
	- clear how to be effective		P
	- no mechanical or thermal stress		P
	- no tying of cables into knots etc.		P
	- insulating material or lining		P
1.10 (5.2.10.1)	Cord anchorage for type X attachment:		N
	a) at least one part fixed		N
	b) types of cable		N
	c) no damaging of the cable		N
	d) whole cable can be mounted		N
	e) no touching of clamping screws		N
	f) metal screw not directly on cable		N
	g) replacement without special tool		N
	Glands not used as anchorage		N
	Labyrinth type anchorages		N
1.10 (5.2.10.2)	Adequate cord anchorage for type Y and type Z attachment		P
1.10 (5.2.10.3)	Tests:		P
	- impossible to push cable; unsafe		P
	- pull test: 25 times; pull (N)..... : 60N		P
	- torque test: torque (Nm)..... : 0.25Nm		P
	- displacement ≤ 2 mm		P
	- no movement of conductors		P
	- no damage of cable or cord		P



<b>IEC 60598-2-1</b>			
Clause	Requirement + Test	Result - Remark	Verdict
	- function independent of electrical connection		N
1.10 (5.2.11)	External wiring passing into luminaire		P
1.10 (5.2.12)	Looping-in terminals		N
1.10 (5.2.13)	Wire ends not tinned		N
	Wire ends tinned: no cold flow		P
1.10 (5.2.14)	Mains plug same protection		N
	Class III luminaire plug		N
	No unsafe compatibility		N
1.10 (5.2.16)	Appliance inlets (IEC 60320)		N
	Installation couplers (IEC 61535)		N
	Other appliance inlet or connector according relevant IEC standard		N
1.10 (5.2.17)	No standardized interconnecting cables properly assembled		N
1.10 (5.2.18)	Used plug in accordance with		N
	- IEC 60083		N
	- other standard		N
<b>1.10 (5.3)</b>	<b>Internal wiring</b>		P
1.10 (5.3.1)	Internal wiring of suitable size and type		P
	Through wiring		N
	- not delivered/ mounting instruction		N
	- factory assembled		N
	- socket outlet loaded (A)..... :		N
	- temperatures..... :	(see Annex 2)	N
	Green- yellow for earth only		P
1.10 (5.3.1.1)	Internal wiring connected directly to fixed wiring		N
	Cross-sectional area (mm <sup>2</sup> )..... :		N
	Insulation thickness		N
	Extra insulation added where necessary		N
1.10 (5.3.1.2)	Internal wiring connected to fixed wiring via internal current-limiting device		P

IEC 60598-2-1			
Clause	Requirement + Test	Result - Remark	Verdict
	Adequate cross-sectional area and insulation thickness		P
1.10 (5.3.1.3)	Double or reinforced insulation for class II		N
1.10 (5.3.1.4)	Conductors without insulation		N
1.10 (5.3.1.5)	SELV current-carrying parts		P
1.10 (5.3.1.6)	Insulation thickness other than PVC or rubber		N
1.10 (5.3.2)	Sharp edges etc.		P
	No moving parts of switches etc.		N
	Joints, raising/lowering devices		N
	Telescopic tubes etc.		N
	No twisting over 360°		P
1.10 (5.3.3)	Insulating bushings:		N
	- suitable fixed		N
	- material in bushings		N
	- material not likely to deteriorate		N
	- cables with protective sheath		N
1.10 (5.3.4)	Joints and junctions effectively insulated		N
1.10 (5.3.5)	Strain on internal wiring		P
1.10 (5.3.6)	Wire carriers		N
1.10 (5.3.7)	Wire ends not tinned		N
	Wire ends tinned: no cold flow		P

<b>1.11 (8)</b>	<b>PROTECTION AGAINST ELECTRIC SHOCK</b>		—
1.11 (8.2.1)	Live parts not accessible		P
	Basic insulated parts not used on the outer surface without appropriate protection		P
	Basic insulated parts not accessible with standard test finger on portable, settable and adjustable luminaires		N
	Basic insulated parts not accessible with Ø 50 mm probe from outside, other types of luminaires		N
	Lamp and starterholders in portable and adjustable luminaires comply with double or reinforced insulation requirements		N

IEC 60598-2-1			
Clause	Requirement + Test	Result - Remark	Verdict
	Basic insulation only accessible under lamp or starter replacement		N
	Protection in any position		P
	Double-ended tungsten filament lamp		N
	Insulation lacquer not reliable		N
	Double-ended high pressure discharge lamp		N
	Relevant warning according to 3.2.18 fitted to the luminaire		N
1.11 (8.2.2)	Portable luminaire adjusted in most unfavourable position		N
1.11 (8.2.3.a)	Class II luminaire:		N
	- basic insulated metal parts not accessible during starter or lamp replacement		N
	- basic insulation not accessible other than during starter or lamp replacement		N
	- glass protective shields not used as supplementary insulation		N
1.11 (8.2.3.b)	BC lampholder of metal in class I luminaires shall be earthed		N
1.11 (8.2.3.c)	SELV circuits with exposed current carrying parts:		N
	Ordinary luminaire:		N
	- touch current .....		N
	- no-load voltage.....		N
	Other than ordinary luminaire:		N
	- nominal voltage .....		N
1.11 (8.2.4)	Portable luminaire have protection independent of supporting surface		N
1.11 (8.2.5)	Compliance with the standard test finger or relevant probe		P
1.11 (8.2.6)	Covers reliably secured		P
1.11 (8.2.7)	Discharging of capacitors $\geq 0,5 \mu\text{F}$		N
	Portable plug connected luminaire with capacitor		N
	Other plug connected luminaire with capacitor		N
	Discharge device on or within capacitor		N
	Discharge device mounted separately		N

IEC 60598-2-1			
Clause	Requirement + Test	Result - Remark	Verdict
<b>1.12 (12)</b>	<b>ENDURANCE TEST AND THERMAL TEST</b>		—
1.12 (-)	If IP > IP 20 relevant test of (12.4), (12.5) and (12.6) after (9.2) before (9.3) specified in 4.13		—
1.12 (12.3)	Endurance test:		P
	- mounting- position..... :	As in normal use	—
	- test temperature (°C)..... :	60°C	—
	- total duration (h)..... :	240h	—
	- supply voltage: Un factor; calculated voltage (V)... :	264V	—
	- lamp used..... :	LED	—
1.12 (12.3.2)	After endurance test:		P
	- no part unserviceable		P
	- luminaire not unsafe		P
	- no damage to track system		N
	- marking legible		P
	- no cracks, deformation etc.		P
1.12 (12.4)	Thermal test (normal operation)	(see Annex 2)	P
1.12 (12.5)	Thermal test (abnormal operation)	(see Annex 2)	N
1.12 (12.6)	Thermal test (failed lamp control gear condition):		N
1.12 (12.6.1)	Through wiring or looping-in wiring loaded by a current of (A) .....		—
	- case of abnormal conditions..... :		—
	- electronic lamp control gear		N
	- measured winding temperature (°C): at 1,1 Un .....		—
	- measured mounting surface temperature (°C) at 1,1 Un..... :		N
	- calculated mounting surface temperature (°C) .....		N
	- track- mounted luminaires		N
1.12 (12.6.2)	Temperature sensing control		N
	- case of abnormal conditions..... :		—
	- thermal link		N
	- manual reset cut-out		N
	- auto reset cut-out		N
	- measured mounting surface temperature (°C)..... :		N
	- track- mounted luminaires		N

IEC 60598-2-1			
Clause	Requirement + Test	Result - Remark	Verdict
1.12 (12.7)	Thermal test (failed lamp control gear in plastic luminaires):		N
1.12 (12.7.1)	Luminaire without temperature sensing control		N
1.12 (12.7.1.1)	Luminaire with fluorescent lamp ≤ 70W		N
	Test method 12.7.1.1 or Annex W .....		—
	Test according to 12.7.1.1:		N
	- case of abnormal conditions.....		—
	- Ballast failure at supply voltage (V) .....		—
	- Components retained in place after the test		N
	- Test with standard test finger after the test		N
	Test according to Annex W:		N
	- case of abnormal conditions.....		—
	- measured winding temperature (°C): at 1,1 Un.....		—
	- measured temperature of fixing point/exposed part (°C): at 1,1 Un.....		—
	- calculated temperature of fixing point/exposed part (°C).....		—
	Ball-pressure test.....	See Table 1.15 (13.2.1)	N
1.12 (12.7.1.2)	Luminaire with discharge lamp, fluorescent lamp > 70W, transformer > 10 VA		N
	- case of abnormal conditions.....		—
	- measured winding temperature (°C): at 1,1 Un.....		—
	- measured temperature of fixing point/exposed part (°C): at 1,1 Un.....		—
	- calculated temperature of fixing point/exposed part (°C).....		—
	Ball-pressure test.....	See Table 1.15 (13.2.1)	N
1.12 (12.7.1.3)	Luminaire with short circuit proof transformers ≤ 10 VA		N
	- case of abnormal conditions.....		—
	- Components retained in place after the test		N
	- Test with standard test finger after the test		N
1.12 (12.7.2)	Luminaire with temperature sensing control		N
	- thermal link.....	Yes <input type="checkbox"/> No <input type="checkbox"/>	—
	- manual reset cut-out.....	Yes <input type="checkbox"/> No <input type="checkbox"/>	—

IEC 60598-2-1			
Clause	Requirement + Test	Result - Remark	Verdict
	- auto reset cut-out..... :	Yes <input type="checkbox"/> No <input type="checkbox"/>	—
	- case of abnormal conditions..... :		—
	- highest measured temperature of fixing point/ exposed part (°C):..... :		—
	Ball-pressure test:..... :	See Table 1.15 (13.2.1)	N

<b>1.13 (9)</b>	<b>RESISTANCE TO DUST, SOLID OBJECTS AND MOISTURE</b>		—
1.13 (-)	If IP > IP 20 the order of tests as specified in clause 1.12		P
1.13 (9.2)	Tests for ingress of dust, solid objects and moisture:		—
	- classification according to IP..... :	IP65	—
	- mounting position during test..... :	As in normal use	—
	- fixing screws tightened; torque (Nm)..... :	--	—
	- tests according to clauses..... :	Clause 9.2.0	—
	- electric strength test afterwards		P
	a) no deposit in dust-proof luminaire		N
	b) no talcum in dust-tight luminaire		P
	c) no trace of water on current-carrying parts or on insulation where it could become a hazard		P
	d) i) For luminaires without drain holes – no water entry		P
	d) ii) For luminaires with drain holes – no hazardous water entry		N
	e) no water in watertight luminaire		N
	f) no contact with live parts (IP 2X)		N
	f) no entry into enclosure (IP 3X and IP 4X)		N
	f) no contact with live parts (IP3X and IP4X)		N
	g) no trace of water on part of lamp requiring protection from splashing water		N
	h) no damage of protective shield or glass envelope		N
1.13 (9.3)	Humidity test 48 h	25°C; 93% R.H.	P

<b>1.14 (10)</b>	<b>INSULATION RESISTANCE AND ELECTRIC STRENGTH</b>		—
1.14 (10.2.1)	Insulation resistance test		P
	Cable or cord covered by metal foil or replaced by a metal rod of mm Ø .....		—
	Insulation resistance (MΩ)..... :		—

IEC 60598-2-1			
Clause	Requirement + Test	Result - Remark	Verdict
	SELV		P
	- between current-carrying parts of different polarity:		N
	- between current-carrying parts and mounting surface.....:	100MΩ	P
	- between current-carrying parts and metal parts of the luminaire.....:	100MΩ	P
	- between the outer surface of a flexible cord or cable where it is clamped in a cord anchorage and accessible metal parts.....:		N
	- Insulation bushings as described in Section 5 .....		N
	Other than SELV		P
	- between live parts of different polarity.....:		N
	- between live parts and mounting surface.....:	100MΩ	P
	- between live parts and metal parts.....:	100MΩ	P
	- between live parts of different polarity through action of a switch.....:		N
	- between the outer surface of a flexible cord or cable where it is clamped in a cord anchorage and accessible metal parts.....:		N
	- Insulation bushings as described in Section 5 .....		N
1.14 (10.2.2)	Electric strength test		P
	Dummy lamp		N
	Luminaires with ignitors after 24 h test		N
	Luminaires with manual ignitors		N
	Test voltage (V).....:		P
	SELV		N
	- between current-carrying parts of different polarity:		N
	- between current-carrying parts and mounting surface.....:	500V	P
	- between current-carrying parts and metal parts of the luminaire.....:	500V	P
	- between the outer surface of a flexible cord or cable where it is clamped in a cord anchorage and accessible metal parts.....:		N
	- Insulation bushings as described in Section 5 .....		N
	Other than SELV		P
	- between live parts of different polarity.....:		N
	- between live parts and mounting surface.....:	1480V	P

<b>IEC 60598-2-1</b>			
Clause	Requirement + Test	Result - Remark	Verdict
	- between live parts and metal parts..... :	1480V	P
	- between live parts of different polarity through action of a switch..... :		P
	- between the outer surface of a flexible cord or cable where it is clamped in a cord anchorage and accessible metal parts..... :		N
	- Insulation bushings as described in Section 5 ..... :		N
1.14 (10.3)	Touch current or protective conductor current (mA):	Protective conductor current: 0.56mA	P

<b>1.15 (13)</b>	<b>RESISTANCE TO HEAT, FIRE AND TRACKING</b>		—
1.15 (13.2.1)	Ball-pressure test..... :	See Test Table 1.15 (13.2.1)	P
1.15 (13.3.1)	Needle-flame test (10 s)..... :	See Test Table 1.15 (13.3.1)	P
1.15 (13.3.2)	Glow-wire test (650°C)..... :	See Test Table 1.15 (13.3.2)	P
1.15 (13.4)	Proof tracking test (IEC 60112)..... :	See Test Table 1.15 (13.4)	N



IEC 60598-2-1								
Clause	Requirement + Test	Result - Remark					Verdict	
<b>1.7 (11.2)</b>	<b>TABLES: Creepage distances and clearances</b>						P	
<b>Table 11.1</b>	<b>Minimum distances (mm) for a.c. (50/60 Hz) sinusoidal voltages</b>						P	
RMS working voltage (V) not exceeding		50	150	250	500	750	1000	
<b>Creepage distances</b>								
Required basic insulation, PTI ≥ 600		0,6	0,8	1,5	3	4	5,5	
Measured		--	--	--	--	--	--	
Required basic insulation, PTI < 600		1,2	1,6	2,5	5	8	10	
Measured		--	--	--	--	--	--	
Required supplementary insulation PTI ≥ 600		-	0,8	1,5	3	4	5,5	
Measured		--	--	--	--	--	--	
Required supplementary insulation PTI < 600		-	1,6	2,5	5	8	10	
Measured		--	--	--	--	--	--	
Required reinforced insulation		-	3,2	5	6	8	11	
Measured		--	--	--	--	--	--	
<b>Clearances</b>								
Required basic insulation		0,2	0,8	1,5	3	4	5,5	
Measured		--	--	--	--	--	--	
Required supplementary insulation		-	0,8	1,5	3	4	5,5	
Measured		--	--	--	--	--	--	
Required reinforced insulation		-	1,6	3	6	8	11	
Measured		--	--	--	--	--	--	
<b>Table 11.2</b>	<b>Minimum distances (mm) for non-sinusoidal pulse voltages</b>							
Rated pulse voltage (peak kV)		2,0	2,5	3,0	4,0	5,0	6,0	8,0
Required clearances		1,0	1,5	2	3	4	5,5	8
Measured		--	--	--	--	--	--	--
Rated pulse voltage (peak kV)		10	12	15	20	25	30	40
Required clearances		11	14	18	25	33	40	60
Measured		--	--	--	--	--	--	--
Rated pulse voltage (peak kV)		50	60	80	100	-	-	-
Required clearances		75	90	130	170	-	-	-
Measured		--	--	--	--	--	--	--

IEC 60598-2-1					
Clause	Requirement + Test	Result - Remark	Verdict		
1.15 (13.2.1)	<b>TABLE: Ball Pressure Test of Thermoplastics</b>				<b>P</b>
<b>Allowed impression diameter (mm) .....</b>		2mm		—	
Object/ Part No./ Material	Manufacturer/ trademark	Test temperature (°C)	Impression diameter (mm)		
LED PCB	See annex 1	125	0.8		
Transparent cover	See annex 1	100	1.0		
Terminal block	See annex 1	100	1.1		
Supplementary information:--					

1.15 (13.3.1)	<b>TABLE: Needle-flame test (IEC 60695-11-5)</b>				<b>P</b>
Object/ Part No./ Material	Manufacturer/ trademark	Duration of application of test flame (ta); (s)	Ignition of specified layer Yes/No	Duration of burning (tb) (s)	Verdict
LED PCB	See annex 1	10s	No	0	Pass
Transparent cover	See annex 1	10s	No	0	Pass
Terminal block	See annex 1	10s	No	0	Pass
Supplementary information:--					

1.15 (13.3.2)	<b>TABLE: Glow-wire test (IEC 60695-2-11)</b>				<b>P</b>
<b>Glow wire temperature .....</b>		650°C		—	
Object/ Part No./ Material	Manufacturer/ trademark	Duration of application of test flame (ta); (s)	Ignition of specified layer Yes/No	Duration of burning (tb) (s)	Verdict
LED PCB	See annex 1	30s	No	0	Pass
Transparent cover	See annex 1	30s	No	0	Pass
Terminal block	See annex 1	30s	No	0	Pass
Any flame or glowing of the sample extinguished within 30 s of withdrawing the glow-wire, and any burning or molten drop did not ignite the underlying parts (Yes/No).....					--
Supplementary information:					

1.15 (13.4)	<b>TABLE: Proof tracking test (IEC 60112)</b>				<b>N</b>
<b>Test voltage PTI .....</b>		175 V		—	
Object/ Part No./ Material	Manufacturer/ trademark	Withstand 50 drops without failure on three places or on three specimens			Verdict
--	--	--	--	--	--

IEC 60598-2-1			
Clause	Requirement + Test	Result - Remark	Verdict

Supplementary information: --

ANNEX 1	TABLE: Critical components information						P
object/part No.	code	manufacturer/ trademark	type/model	technical data	standard	mark(s) of conformity	
LED module PCB	B	SHENZHEN YU XINDA SCIENCE AND TECHNOLOGY CO.,LTD.	YXD1	Aluminium base, V-0	--	UL E352507	
LED	B	LUMILEDS	LUXEON 3030-2D	Vf: 5.8-6.6Vdc, If: 120mA	IEC 62471	Tested with appliance	
Alt.	B	LUMILEDS	LUXEON 5050	Vf: 23.5-26.5Vdc, If: 160mA	IEC 62471	Tested with appliance	
Alt.	B	OSRAM	GW PSLR31.P M	Vf: 5.6-6.6Vdc, If: 150mA	IEC 62471	Tested with appliance	
Alt.	B	OSRAM	GW P9LR3 1.EM 5050	Vf: 23.2-26.4Vdc, If: 160mA	IEC 62471	Tested with appliance	
Alt.	B	NICHIA	NICHIA 3030	Vf: 6.4Vdc, If: 150mA	IEC 62471	Tested with appliance	
Transparent cover	B	TEIJIN CHEMICALS PLASTIC COMPOUNDS STANGHAI LTD	L-1225U(#)(f1), L-1225V(#)(f1), L-1225Z(#1)(f1)	HB, PC, 115°C	--	UL E244344	
Supply cord of LED driver	B	DONGGUAN RECHEER ELECTIC WIRE&CABLE CO.,LTD	H05RN-F	3G1.0mm <sup>2</sup>	IEC/EN 60245-4	VDE 40015131	
Output cord of LED driver	B	DONGGUAN RECHEER ELECTIC WIRE&CABLE CO.,LTD	H05RN-F	2G1.0mm <sup>2</sup>	IEC/EN 60227-5	VDE 40015999	
LED driver	B	Mean Well Enterprises Co., Ltd.	HBG-100-48B	I/P: 100-240V~, 50/60Hz, Max. 1.1A O/P: Max 49Vdc, 2.0A, 96W ta:60°C, tc:85°C, IP67	IEC/EN 61347-2-13 IEC/EN 61347-1	CE-160127-EA	

IEC 60598-2-1						
Clause	Requirement + Test			Result - Remark	Verdict	
Alt.	B	Mean Well Enterprises Co., Ltd.	HBG-160-48B	I/P: 100-240V~, 50/60Hz, Max. 1.7A O/P: Max +48Vdc, 3.3A, 158.4W ta:50°C, tc:85°C, IP67	IEC/EN 61347-2-13 IEC/EN 61347-1	CE-160128-EA
Alt.	B	Mean Well Enterprises Co., Ltd.	HBG-200-48B	I/P: 100-240V~, 50/60Hz, Max. 2.0A O/P: Max 49Vdc, 4.0A, 200W ta:50C, tc:75C, IP67	IEC/EN 61347-2-13 IEC/EN 61347-1	CE-160085-EA
Alt.	B	Mean Well Enterprises Co., Ltd.	HBG-240-48B	I/P: 100-240V~, 50/60Hz, Max. 2.5A O/P: Max 49Vdc, 5.0A, 240W ta:50°C, tc:75°C, IP67	IEC/EN 61347-2-13 IEC/EN 61347-1	CE-160086-EA

The codes above have the following meaning:

- A - The component is replaceable with another one, also certified, with equivalent characteristics
- B - The component is replaceable if authorised by the test house
- C - Integrated component tested together with the appliance
- D - Alternative component

IEC 60598-2-1							
Clause	Requirement + Test	Result - Remark				Verdict	
<b>ANNEX 2</b>	<b>TABLE: Temperature measurements, thermal tests of Section 12</b>					<b>P</b>	
	Type reference.....:	AOK-100WoH-NV-L3-0(B0)				—	
	Lamp used.....:	LED				—	
	Lamp control gear used.....:	HBG-100-48B				—	
	Mounting position of luminaire.....:	As normal use				—	
	Supply wattage (W).....:	106V:103.3W; 254.4V:100.7W				—	
	Supply current (A).....:	106V:0.977A; 254.4V:0.404A				—	
	Calculated power factor.....:	106V:0.995; 254.4:0.977				—	
	Table: measured temperatures corrected for ta = 50 °C:					<b>P</b>	
	- abnormal operating mode.....:	--				—	
	- test 1: rated voltage.....:	--				—	
	- test 2: 1,06 times rated voltage or 1,05 times rated wattage.....:	1.06x100V=106V; 1,06x240V=254,4V				—	
	- test 3: Load on wiring to socket-outlet, 1,06 times voltage or 1,05 times wattage.....:	--				—	
	- test 4: 1,1 times rated voltage or 1,05 times rated wattage.....:	--				—	
	Through wiring or looping-in wiring loaded by a current of A during the test .....	--				—	
Temperature measurements, (°C)							
Part	Clause 12.4 – normal					Clause 12.5 – abnormal	
	test 1	test 2		test 3	limit	test 4	limit
Test voltage	--	106	254.4	--	--	--	--
Supply cord of LED driver	--	67.4	67.8	--	90	--	--
tc of LED driver	--	80.8	80.9	--	90	--	--
Input cord near LED module PCB	--	86.9	89.1	--	105	--	--
LED module PCB	--	87.2	89.8	--	Ref.	--	--
Metal enclosure	--	78.0	79.8	--	Ref.	--	--
Transparent cover	--	78.0	80.8	--	115	--	--
Mounting surface	--	55.4	56.8	--	90	--	--
Supplementary information:							

IEC 60598-2-1			
Clause	Requirement + Test	Result - Remark	Verdict

<b>ANNEX 2</b>	<b>TABLE: Temperature measurements, thermal tests of Section 12</b>		P
	Type reference.....:	AOK-150WoH-NV-L3-0(B0)	—
	Lamp used.....:	LED	—
	Lamp control gear used.....:	HBG-160-48B	—
	Mounting position of luminaire.....:	As normal use	—
	Supply wattage (W).....:	106V:158.2W; 254.4V:155.2W	—
	Supply current (A).....:	106V:1.56A; 254.4V:0.636A	—
	Calculated power factor.....:	106V:0.995; 254.4:0.959	—
	Table: measured temperatures corrected for ta = 50 °C:		P
	- abnormal operating mode.....:	--	—
	- test 1: rated voltage.....:	--	—
	- test 2: 1,06 times rated voltage or 1,05 times rated wattage.....:	1.06x100V=106V; 1,06x240V=254,4V	—
	- test 3: Load on wiring to socket-outlet, 1,06 times voltage or 1,05 times wattage.....:	--	—
	- test 4: 1,1 times rated voltage or 1,05 times rated wattage.....:	--	—
	Through wiring or looping-in wiring loaded by a current of A during the test .....	--	—

Temperature measurements, (°C)							
Part	Clause 12.4 – normal					Clause 12.5 – abnormal	
	test 1	test 2		test 3	limit	test 4	limit
Test voltage	--	106	254.4	--	--	--	--
Supply cord of LED driver	--	68.8	67.1	--	90	--	--
tc of LED driver	--	84.1	81.2	--	90	--	--
Input cord near LED module PCB	--	90.7	89.9	--	105	--	--
LED module PCB	--	91.2	92.3	--	Ref.	--	--
Metal enclosure	--	80.1	79.9	--	Ref.	--	--
Transparent cover	--	82.8	92.9	--	115	--	--
Mounting surface	--	55.6	55.5	--	90	--	--
Supplementary information:							

**IEC 60598-2-1**

Clause	Requirement + Test	Result - Remark	Verdict
--------	--------------------	-----------------	---------

ANNEX 2	TABLE: Temperature measurements, thermal tests of Section 12	P
	Type reference.....: AOK-240WoH-NV-L3-0(B0)	—
	Lamp used.....: LED	—
	Lamp control gear used.....: HBG-240-48B	—
	Mounting position of luminaire.....: As normal use	—
	Supply wattage (W).....: 106V:253.5W; 254.4V:242.0W	—
	Supply current (A).....: 106V:2.391A; 254.4V:0.982A	—
	Calculated power factor.....: 106V:0.997; 254.4:0.968	—
	Table: measured temperatures corrected for ta = 50 °C:	P
	- abnormal operating mode.....: --	—
	- test 1: rated voltage.....: --	—
	- test 2: 1,06 times rated voltage or 1,05 times rated wattage.....: 1.06x100V=106V; 1,06x240V=254,4V	—
	- test 3: Load on wiring to socket-outlet, 1,06 times voltage or 1,05 times wattage.....: --	—
	- test 4: 1,1 times rated voltage or 1,05 times rated wattage.....: --	—
	Through wiring or looping-in wiring loaded by a current of A during the test .....: --	—

**Temperature measurements, (°C)**

Part	Clause 12.4 – normal					Clause 12.5 – abnormal	
	test 1	test 2		test 3	limit	test 4	limit
Test voltage	--	106	254.4	--	--	--	--
Supply cord of LED driver	--	69.4	67.8	--	90	--	--
tc of LED driver	--	78.8	78.5	--	90	--	--
Input cord near LED module PCB	--	87.9	86.5	--	105	--	--
LED module PCB	--	90.1	92.8	--	Ref.	--	--
Metal enclosure	--	81.5	84.5	--	Ref.	--	--
Transparent cover	--	79.4	82.4	--	115	--	--
Mounting surface	--	56.1	57.2	--	90	--	--

Supplementary information:

IEC 60598-2-1			
Clause	Requirement + Test	Result - Remark	Verdict
<b>ANNEX 3</b>	<b>Screw terminals (part of the luminaire)</b>		N
<b>(14)</b>	<b>SCREW TERMINALS</b>		N
(14.2)	Type of terminal..... :		—
	Rated current (A)..... :		—
(14.3.2.1)	One or more conductors		N
(14.3.2.2)	Special preparation		N
(14.3.2.3)	Terminal size		N
	Cross-sectional area (mm <sup>2</sup> )..... :		—
(14.3.3)	Conductor space (mm)..... :		N
(14.4)	Mechanical tests		N
(14.4.1)	Minimum distance		N
(14.4.2)	Cannot slip out		N
(14.4.3)	Special preparation		N
(14.4.4)	Nominal diameter of thread (metric ISO thread)..... :	M	N
	External wiring		N
	No soft metal		N
(14.4.5)	Corrosion		N
(14.4.6)	Nominal diameter of thread (mm)..... :		N
	Torque (Nm)..... :		N
(14.4.7)	Between metal surfaces		N
	Lug terminal		N
	Mantle terminal		N
	Pull test; pull (N)..... :		N
(14.4.8)	Without undue damage		N



IEC 60598-2-1			
Clause	Requirement + Test	Result - Remark	Verdict
<b>ANNEX 4</b>	<b>Screwless terminals (part of the luminaire)</b>		N
<b>(15)</b>	<b>SCREWLESS TERMINALS</b>		N
(15.2)	Type of terminal.....:		—
	Rated current (A).....:		—
(15.3.1)	Material		N
(15.3.2)	Clamping		N
(15.3.3)	Stop		N
(15.3.4)	Unprepared conductors		N
(15.3.5)	Pressure on insulating material		N
(15.3.6)	Clear connection method		N
(15.3.7)	Clamping independently		N
(15.3.8)	Fixed in position		N
(15.3.10)	Conductor size		N
	Type of conductor		N
(15.5.1)	Terminals internal wiring		N
(15.5.1.1)	Pull test spring-type terminals (4 N, 4 samples).....:		N
(15.5.1.2)	Pull test pin or tab terminals (4 N, 4 samples).....:		N
	Insertion force not exceeding 50 N		N
(15.5.1.2)	Permanent connections: pull-off test (20 N)		N
(15.5.2)	Electrical tests		N
	Voltage drop (mV) after 1 h (4 samples).....:		N
	Voltage drop of two inseparable joints		N
	Number of cycles:		—
	Voltage drop (mV) after 10th alt. 25th cycle (4 samples).....:		N
	Voltage drop (mV) after 50th alt. 100th cycle (4 samples).....:		N
	After ageing, voltage drop (mV) after 10th alt. 25th cycle (4 samples).....:		N
	After ageing, voltage drop (mV) after 50th alt. 100th cycle (4 samples).....:		N
(15.6)	Terminals external wiring		N
	Terminal size and rating		N
(15.6.2.1)	Pull test spring-type terminals or welded connections (4 samples); pull (N) .....		N
	Pull test pin or tab terminals (4 samples); pull (N) .....		N

IEC 60598-2-1			
Clause	Requirement + Test	Result - Remark	Verdict

<b>(15.6.3.1)</b>	<b>TABLE: Contact resistance test</b>									N
	Voltage drop (mV) after 1 h									—
terminal	1	2	3	4	5	6	7	8	9	10
voltage drop (mV)	--	--	--	--	--	--	--	--	--	--
	Voltage drop of two inseparable joints									N
	Voltage drop after 10th alt. 25th cycle									N
	Max. allowed voltage drop (mV).....:									—
terminal	1	2	3	4	5	6	7	8	9	10
voltage drop (mV)	--	--	--	--	--	--	--	--	--	--
	Voltage drop after 50th alt. 100th cycle									N
	Max. allowed voltage drop (mV).....:									—
terminal	1	2	3	4	5	6	7	8	9	10
voltage drop (mV)	--	--	--	--	--	--	--	--	--	--
	Continued ageing: voltage drop after 10th alt. 25th cycle									N
	Max. allowed voltage drop (mV).....:									—
terminal	1	2	3	4	5	6	7	8	9	10
voltage drop (mV)	--	--	--	--	--	--	--	--	--	--
	Continued ageing: voltage drop after 50th alt. 100th cycle									N
	Max. allowed voltage drop (mV).....:									—
terminal	1	2	3	4	5	6	7	8	9	10
voltage drop (mV)	--	--	--	--	--	--	--	--	--	--
Supplementary information:										

<b>Attachment 1: Test report of EN 62031</b>			
Clause	Requirement - Test	Result	Verdict
<b>4</b>	<b>GENERAL REQUIREMENTS</b>		—
4.4	Integral modules tested assembled in the luminaire		P
4.5	Independent modules complies with requirements in IEC 60598-1		N
<b>5</b>	<b>GENERAL TEST REQUIREMENTS</b>		—
5.5	SELV-operated LED modules comply with Annex I of IEC 61347-2-13	(see Annex 1)	N
	General conditions for tests in Annex A	(see Annex A)	P
<b>6</b>	<b>CLASSIFICATION</b>		—
	Built-in module .....	Yes <input type="checkbox"/> No <input checked="" type="checkbox"/>	—
	Independent module.....	Yes <input type="checkbox"/> No <input checked="" type="checkbox"/>	—
	Integral module .....	Yes <input checked="" type="checkbox"/> No <input type="checkbox"/>	—
	For Integral module; Note to 1.2.1 in IEC 60598-1 applies.		—
<b>7</b>	<b>MARKING</b>		—
	Requirements not applicable to the evaluated product.		N
<b>8</b>	<b>TERMINALS</b>		—
	Screw terminals according section 14 of IEC 60598-1:		N
	Separately approved; component list	(see Annex 2)	N
	Part of the luminaire	(see Annex 3)	N
	Screwless terminals according section 15 of IEC 60598-1:		N
	Separately approved; component list	(see Annex 2)	N
	Part of the luminaire	(see Annex 4)	N
	Connectors according IEC 60838-2-2:		N
	Separately approved; component list	(see Annex 2)	N
<b>9 (9)</b>	<b>PROVISION FOR PROTECTIVE EARTHING</b>		—
	Requirements not applicable to the evaluated product.		N
<b>10 (10)</b>	<b>PROTECTION AGAINST ACCIDENTAL CONTACT WITH LIVE PARTS</b>		—
	Requirements not applicable to the evaluated product.		N

Attachment 1: Test report of EN 62031			
Clause	Requirement - Test	Result	Verdict
<b>11 (11)</b>	<b>MOISTURE RESISTANCE AND INSULATION</b>		—
	After storage 48 h at 91-95% relative humidity and 20-30 °C measuring of insulation resistance with d.c. 500 V (MΩ):		P
	For basic insulation $\geq 2 \text{ M}\Omega$ .....	100MΩ	P
	For double or reinforced insulation $\geq 4 \text{ M}\Omega$ .....		N
	Between primary and secondary circuits in controlgear providing SELV, values in Annex L in IEC 61347-1		N
<b>12 (12)</b>	<b>ELECTRIC STRENGTH</b>		—
	Immediately after clause 11 electric strength test for 1 min		P
	Basic insulation for SELV, test voltage 500 V		P
	Working voltage $\leq 50 \text{ V}$ , test voltage 500 V		N
	Working voltage $> 50 \text{ V} \leq 1000 \text{ V}$ , test voltage (V):		N
	Basic insulation, $2U + 1000 \text{ V}$		N
	Supplementary insulation, $2U + 1000 \text{ V}$		N
	Double or reinforced insulation, $4U + 2000 \text{ V}$		N
	No flashover or breakdown		P
	Solid or thin sheet insulation for double or reinforced insulation fulfil the requirements in Annex N in IEC 61347-1		N
<b>13 (14)</b>	<b>FAULT CONDITIONS</b>		—
- (14)	When operated under fault conditions the controlgear:		N
	- does not emit flames or molten material		N
	- does not produce flammable gases		N
	- protection against accidental contact not impaired		N
	Thermally protected controlgear does not exceed the marked temperature value		N
	Fault conditions: capacitors, resistors or inductors without proof of compliance with relevant specifications have been short-circuited or disconnected	(see appended table)	N
- (14.1)	Short-circuit of creepage distances and clearances if less than specified in clause 16 in Part 1 (except between live parts and accessible metal parts)	(see appended table)	N
	Creepage distances on printed boards less than specified in clause 16 in Part 1 provided with coating according to IEC 60664-3		N

<b>Attachment 1: Test report of EN 62031</b>			
Clause	Requirement - Test	Result	Verdict
- (14.2)	Short-circuit or interruption of semiconductor devices	(see appended table)	N
- (14.3)	Short-circuit across insulation consisting of lacquer, enamel or textile	(see appended table)	N
- (14.4)	Short-circuit across electrolytic capacitors	(see appended table)	N
- (14.5)	After the tests has been carried out on three samples:		N
	The insulation resistance $\geq 1 \text{ M}\Omega$ .....		N
	No flammable gases		N
	No accessible parts have become live		N
	During the tests, a five-layer tissue paper, where the test specimen is wrapped, does not ignite		N
- (14.6)	Relevant fault condition tests with high-power supply		N
<b>13.2</b>	<b>Overpower condition</b>		P
	Module withstands overpower condition >15 min.		P
	Module with automatic protective device or power limiter, test performed 15 min. at limit.		N
	No fire, smoke or flammable gas is produced		P
	Molten material does not ignite tissue paper, spread below the module		N
<b>15</b>	<b>CONSTRUCTION</b>		—
	Wood, cotton, silk, paper and similar fibrous material not used as insulation		P
<b>16 (16)</b>	<b>CREEPAGE DISTANCES AND CLEARANCES</b>		—
- (16)	Creepage and distances and clearances in compliance with IEC 61347-1		P
	Insulating lining of metallic enclosures		N
	Basic insulation on printed boards tested according to clause 14		P
	Distances subjected to both sinusoidal voltage as non-sinusoidal pulses not less than value in Table 16		P
	Creepage distances not less than minimum clearance		P
16 (-)	Conductive accessible parts in compliance with applicable parts of IEC 60598-1		N

<b>Attachment 1: Test report of EN 62031</b>			
Clause	Requirement - Test	Result	Verdict
<b>17 (17)</b>	<b>SCREWS, CURRENT-CARRYING PARTS AND CONNECTIONS</b>		—
	Screws, current-carrying parts and connections in compliance with IEC 60598-1 (clause numbers between parentheses refer to IEC 60598-1)		P
<b>18 (18)</b>	<b>RESISTANCE TO HEAT, FIRE AND TRACKING</b>		—
- (18.1)	Ball-pressure test .....	See Test Table 18 (18.1)	N
- (18.3)	Glow-wire test (650°C) .....	See Test Table 18 (18.3)	N
- (18.4)	Needle-flame test (10 s) .....	See Test Table 18 (18.4)	N
- (18.5)	Proof tracking test .....	See Test Table 18 (18.5)	N
<b>19 (19)</b>	<b>RESISTANCE TO CORROSION</b>		—
	- test according 4.18.1 of IEC 60598-1		N
	- adequate varnish on the outer surface		N
<b>20</b>	<b>INFORMATION FOR LUMINAIRE DESIGN</b>		—
	Information in Annex D (informative)		—
<b>21</b>	<b>HEAT MANAGEMENT</b>		—
<b>21.1</b>	<b>General</b>		N
	Exchangeability is safeguarded by cap or base		N
<b>21.2</b>	<b>Heat-conducting foil and paste</b>		N
	Heat-conducting foil delivered with the module if necessary		N
<b>22</b>	<b>PHOTOBIOLOGICAL SAFETY</b>		—
<b>22.1</b>	<b>UV radiation</b>		N
	Luminous radiation not exceed 2mW/klm		N
<b>22.2</b>	<b>Blue light hazard</b>		P
	Assessed according to IEC TR 62778		P
<b>22.3</b>	<b>Infrared radiation</b>		N
	Requirements for infrared radiation when required		N
<b>A</b>	<b>ANNEX A - TESTS</b>		—
	All tests performed in accordance with the advice given in Annex H of IEC 61347-1, if applicable		P
	<b>ANNEX 1 - SELV-operated LED modules</b>		—
	SELV-operated LED modules in compliance with Annex I of IEC 61347-2-13		N

**Attachment 2: Test report of EN 62471**

Clause	Requirement + Test	Result – Remark	Verdict
--------	--------------------	-----------------	---------

Table 6.1		Emission limits for risk groups of continuous wave lamps								P
Risk	Action spectrum	Symbol	Units	Emission Measurement						
				Exempt		Low risk		Mod risk		
				Limit	Result	Limit	Result	Limit	Result	
Actinic UV	$S_{UV}(\lambda)$	$E_s$	$W \cdot m^{-2}$	0,001	0	—	—	—	—	
Near UV		$E_{UVA}$	$W \cdot m^{-2}$	0,33	0,05433	—	—	—	—	
Blue light	$B(\lambda)$	$L_B$	$W \cdot m^{-2} \cdot sr^{-1}$	100	49,5	10500	—	4000000	—	
Blue light, small source	$B(\lambda)$	$E_B$	$W \cdot m^{-2}$	0,01*	---	1,0	—	400	—	
Retinal thermal	$R(\lambda)$	$L_R$	$W \cdot m^{-2} \cdot sr^{-1}$	$28000/\alpha$	1015	$31000/\alpha$	—	$71000/\alpha$	—	
Retinal thermal, weak visual stimulus**	$R(\lambda)$	$L_{IR}$	$W \cdot m^{-2} \cdot sr^{-1}$	—		—		—		
				$6000/\alpha$ $0,011 \leq \alpha \leq 0,1$		—		—		
IR radiation, eye	—	$E_{IR}$	$W \cdot m^{-2}$	100	2,3456	570	—	3200	—	

\* Small source defined as one with  $\alpha < 0,011$  radian. Averaging field of view at 10000 s is 0,1 radian.  
\*\* Involves evaluation of non-GLS source

**Attachment 3: Test report of EN 62493**

Clause	Requirement + Test	Result - Remark	Verdict		
<b>4.2</b>	<b>APPLICATION OF LIMITS (Test summary)</b>		—		
	<b>Specific absorption rate (SAR)</b>		—		
a)	CISPR 15 clause 4.3.1 Disturbance voltage mains terminals 20 kHz – 30 MHz	*)	P		
b)	CISPR 15 clause 4.4 Radiated electromagnetic disturbances 100 kHz – 30 MHz	*)	P		
c)	CISPR 15 clause 4.4.2 Radiated electromagnetic disturbances 30 MHz – 300 MHz	*)	P		
*)	<input checked="" type="checkbox"/> See separate Test Report for measurements of a), b) and c) above <input type="checkbox"/> Only measurement of d) below. See measurement results below. In this case this test report does not show compliance with IEC 62493.		—		
	<b>Induced current density</b>		P		
d)	Induced current density 20 kHz – 10 MHz	See measurement results below	P		
<b>4.2.d</b>	<b>INDUCED CURRENT DENSITY</b>		—		
	Power supply system utilised:		—		
	Voltage.....:	AC 100-240V	—		
	Frequency.....:	50/60Hz	—		
	Environmental conditions:		—		
	Temperature .....	25°C	—		
	Humidity.....:	52% R.H.	—		
	EuT operation mode:		—		
	<input checked="" type="checkbox"/> Normal operation		—		
	<input type="checkbox"/> Other operation:		—		
<b>4.2.d</b>	<b>MEASUREMENT RESULTS</b>		—		
	Measuring with “Van der Hoofden” test head		—		
	Location of EuT	Measuring distance	Result (F)	Limit (F)	Verdict
	Front of EuT	50 cm	0,14	0,85	P
	Rear of EuT	50 cm	0,18	0,85	P
	Side of EuT	50 cm	0,22	0,85	P



<b>Attachment 4: EUROPEAN GROUP DIFFERENCES AND NATIONAL DIFFERENCES</b> according to EN 60598-2-1:1989 and EN 60598-1:2015			
Clause	Requirement + Test	Result - Remark	Verdict
<b>CENELEC COMMON MODIFICATIONS (EN)</b>			
<b>1.5 (3)</b>	<b>MARKING</b>		—
1.5 (3.3.101)	For luminaires not supplied with terminal block: Adequate warning on the package		N
<b>1.6 (4)</b>	<b>CONSTRUCTION</b>		—
1.6 (4.11.6)	Electro-mechanical contact systems		N
<b>1.10 (5)</b>	<b>EXTERNAL AND INTERNAL WIRING</b>		—
1.10 (5.2.1)	Connecting leads		P
	- without a means for connection to the supply		N
	- terminal block specified		N
	- relevant information provided		N
	- compliance with 4.6, 4.7.1, 4.7.2, 4.10.1, 11.2, 12 and 13.2 of Part 1		P
1.10 (5.2.2)	Cables equal to EN 50525		P
	Replace table 5.1 – Supply cord		P
<b>1.12 (12)</b>	<b>ENDURANCE TESTS AND THERMAL TESTS</b>		—
1.12 (12.4.2c)	Thermal test (normal operation) see footnote c to table 12.2 relating to unsleeved fixed wiring		P
<b>ZB</b>	<b>ANNEX ZB, SPECIAL NATIONAL CONDITIONS (EN)</b>		—
(3.3)	DK: power supply cords of class I luminaires with label		N
(4.5.1)	DK: socket-outlets		N
(5.2.1)	CY, DK, FI, GB: type of plug		N
<b>ZC</b>	<b>ANNEX ZC, NATIONAL DEVIATIONS (EN)</b>		—
(4 & 5)	FR: Shuttered socket-outlets 10/16A		N

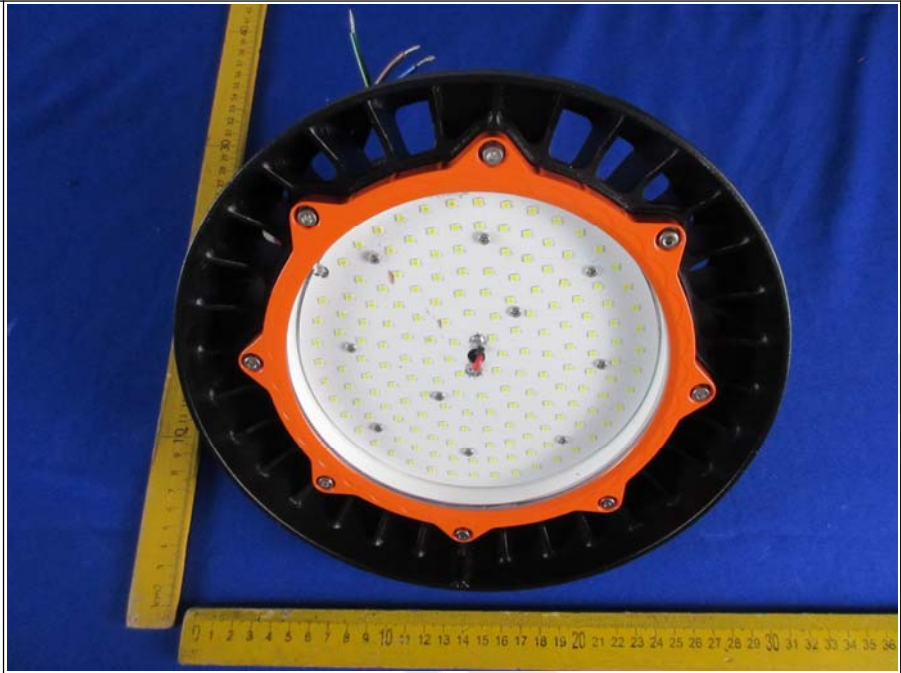
Attachment 4: EUROPEAN GROUP DIFFERENCES AND NATIONAL DIFFERENCES according to EN 60598-2-1:1989 and EN 60598-1:2015			
Clause	Requirement + Test	Result - Remark	Verdict
	FR: Safety requirements for high buildings  (Arrêté du 30 décembre 2011 portant règlement de sécurité pour la construction des immeubles de grande hauteur et leur protection contre les risques d'incendie et de panique; Section VIII; Article GH 48, Eclairage)  Glow-wire test for outer parts of luminaires:		N
	- 850°C for luminaires in stairways and horizontal travel paths		N
	- 650°C for indoor luminaires		N
	GB: Requirements according to United Kingdom Building Regulation		N

Anbotek

**Attachment 5: Photo documentation**

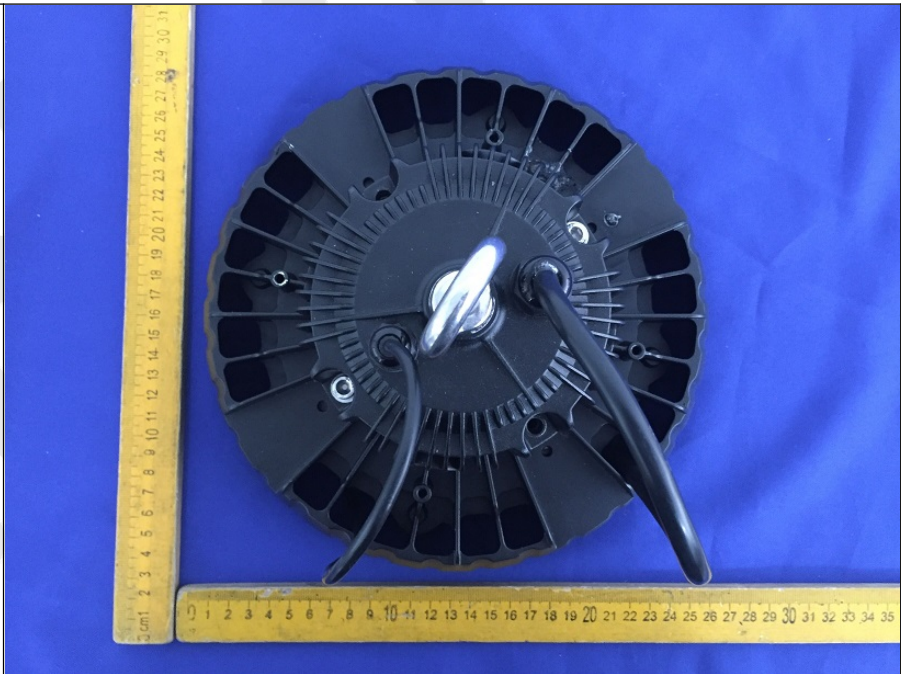
**Photo 1**

AOK-100WoH-NV-L3-0(B0)

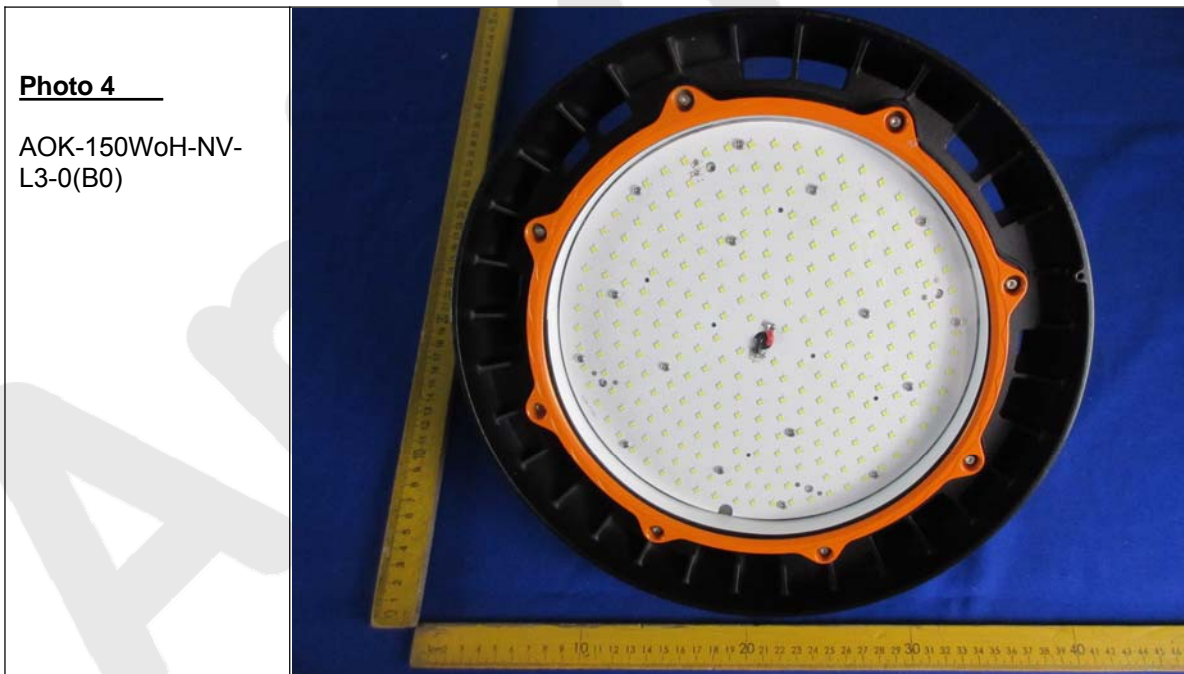
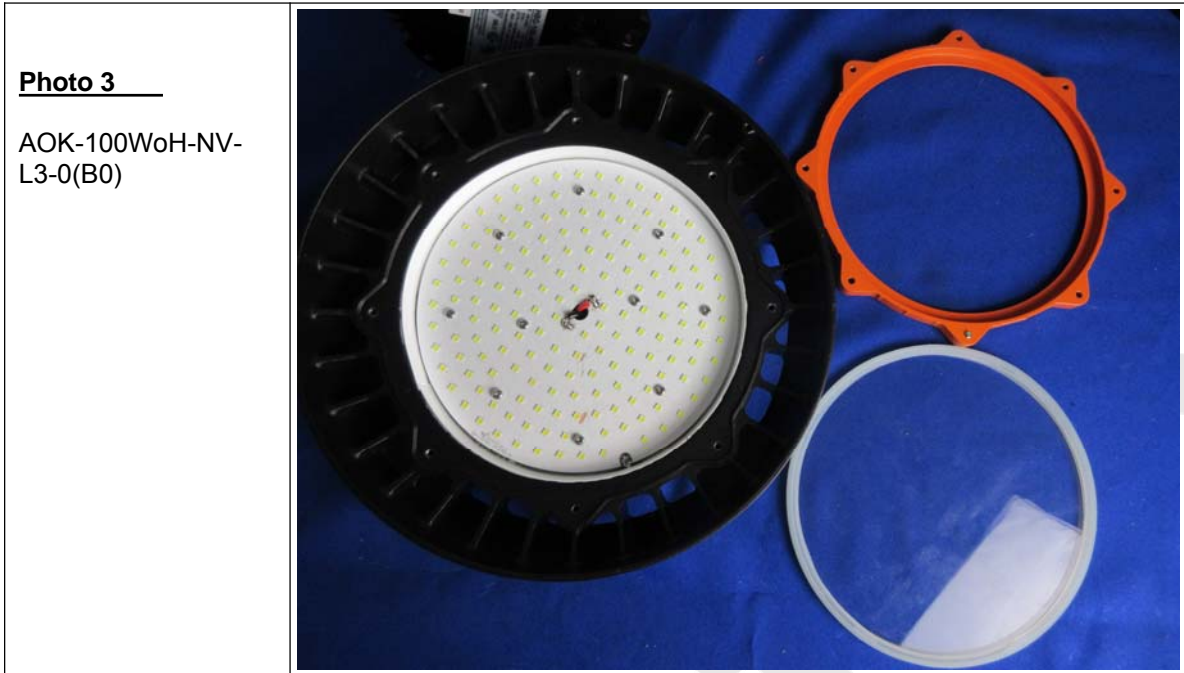


**Photo 2**

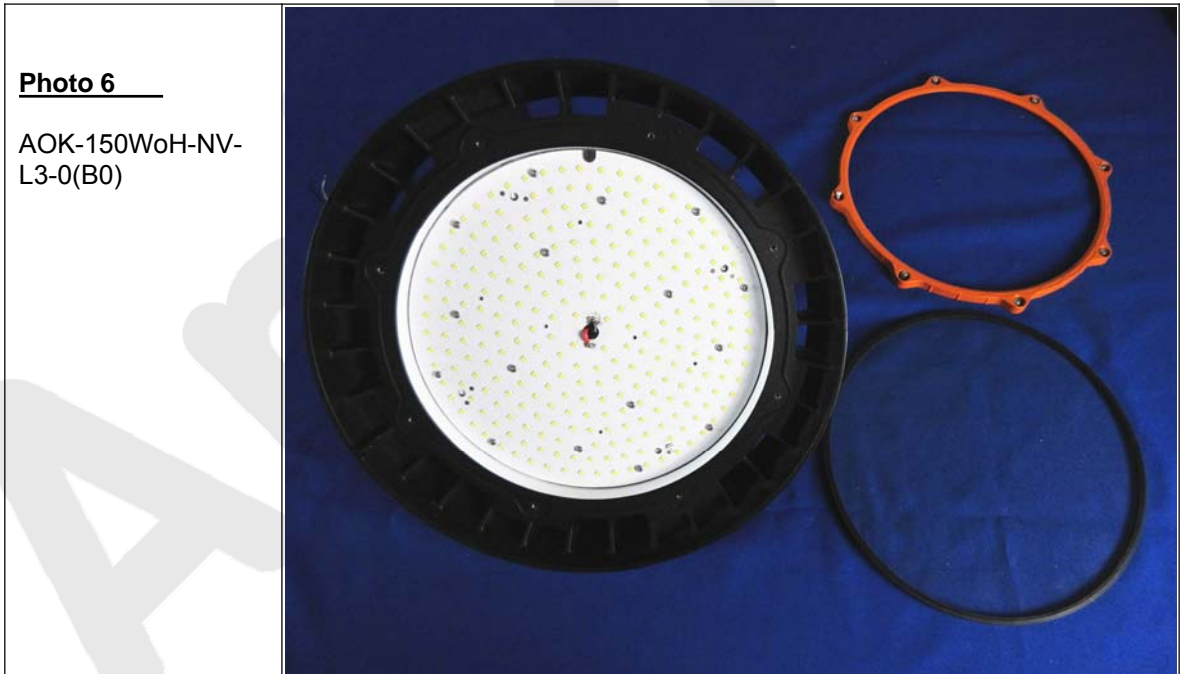
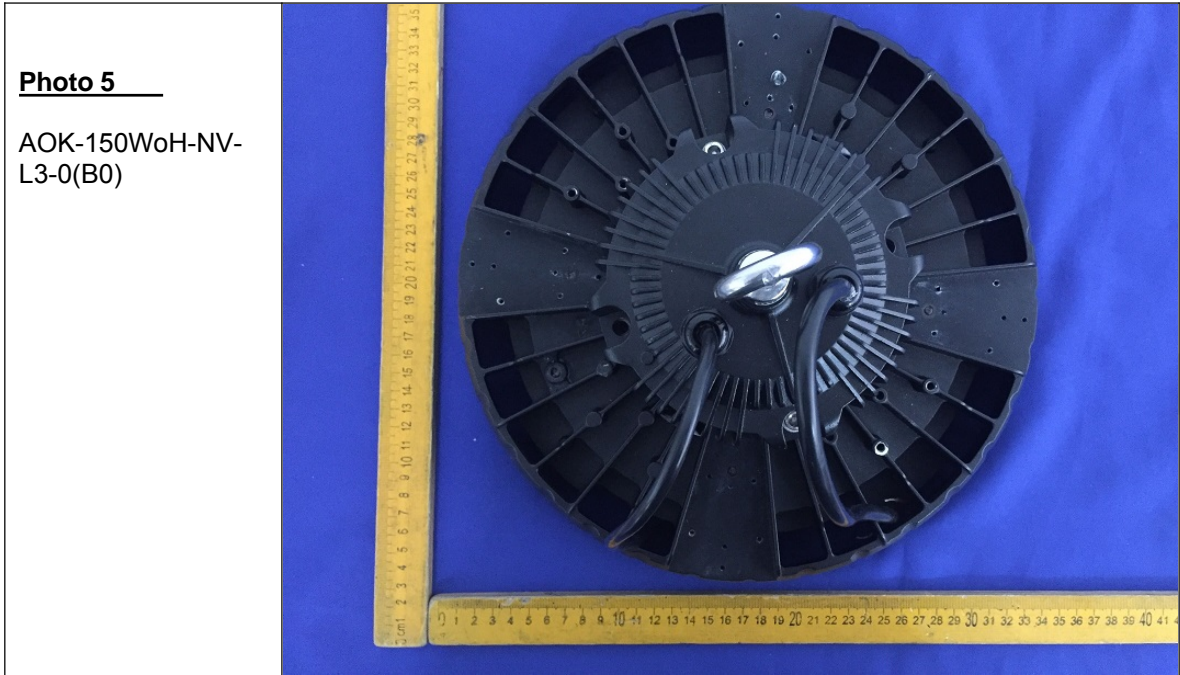
AOK-100WoH-NV-L3-0(B0)



**Attachment 5: Photo documentation**



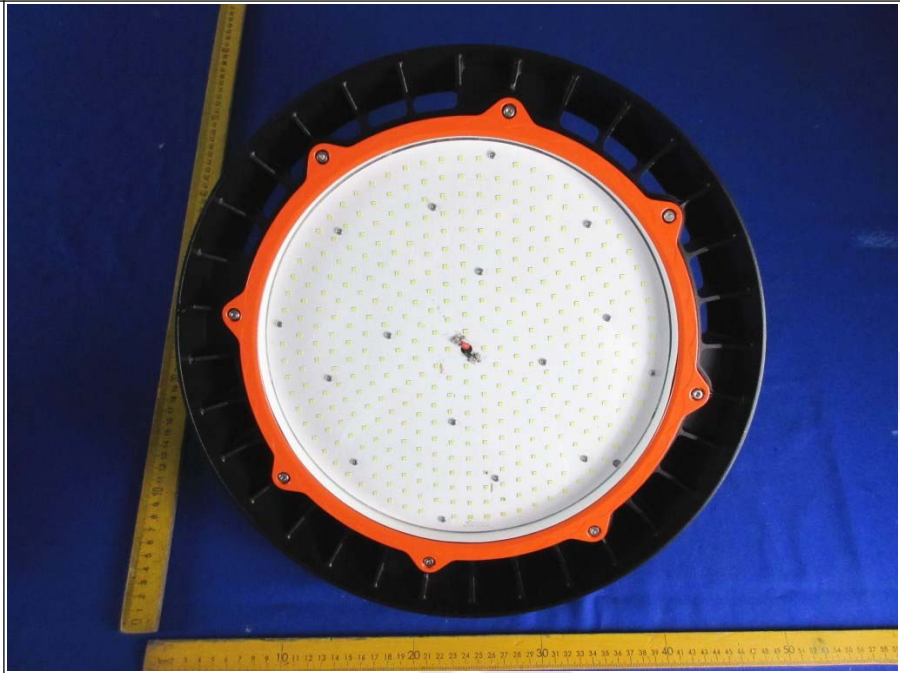
**Attachment 5: Photo documentation**



**Attachment 5: Photo documentation**

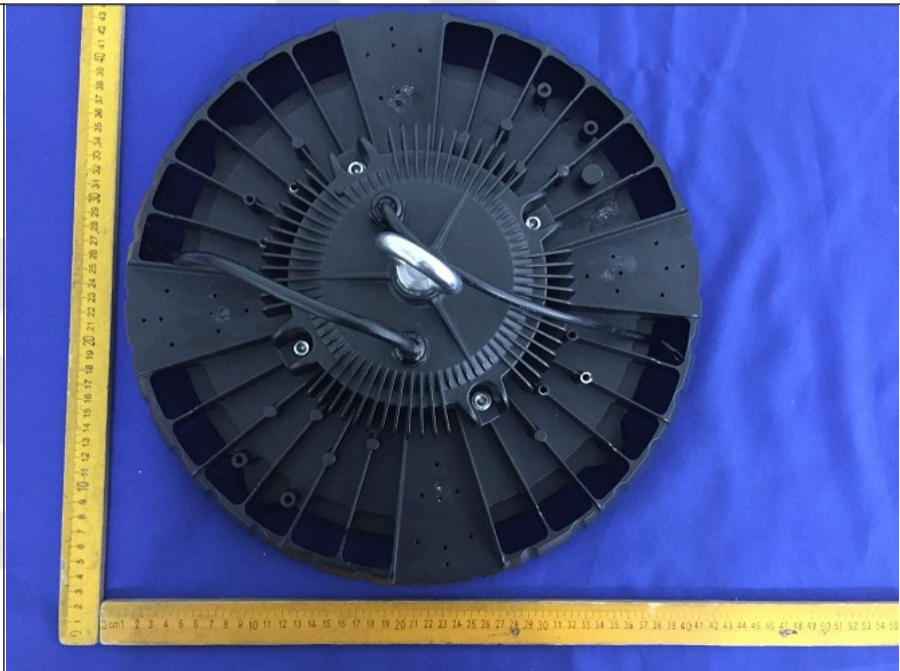
**Photo 7**

AOK-240WoH-NV-  
L3-0(B0)



**Photo 8**

AOK-240WoH-NV-  
L3-0(B0)



Attachment 5: Photo documentation

